

11.56+ ACRES ON CANALS FOR SALE

**BURNT STORE RD. & EMBERS PKWY.
CAPE CORAL, FL 33993**



PROPERTY INFORMATION

- ◆ **PRICE:** \$ 5,700,000
- ◆ **SIZE:** 11.56± ACRES
- ◆ **LOCATION:** SOUTHEAST CORNER OF BURNT STORE ROAD & EMBERS PARKWAY WEST
- ◆ **ZONING:** RD (RESIDENTIAL DEVELOPMENT)
- ◆ **LAND USE:** COMMERCIAL ACITIVITY CENTER
- ◆ **UTILITIES:** START DATE - 2010
COMPLETION DATE - 2012

FOR MORE INFORMATION CONTACT:

Stephen A. Cunningham, MAI, CCIM
Managing Partner
12800 University Drive, Suite 150, Ft. Myers, FL 33907
PH: 239-333-4360 FX: 239-275-4699 Cell: 239-910-4085
scunningham@lqwest.com

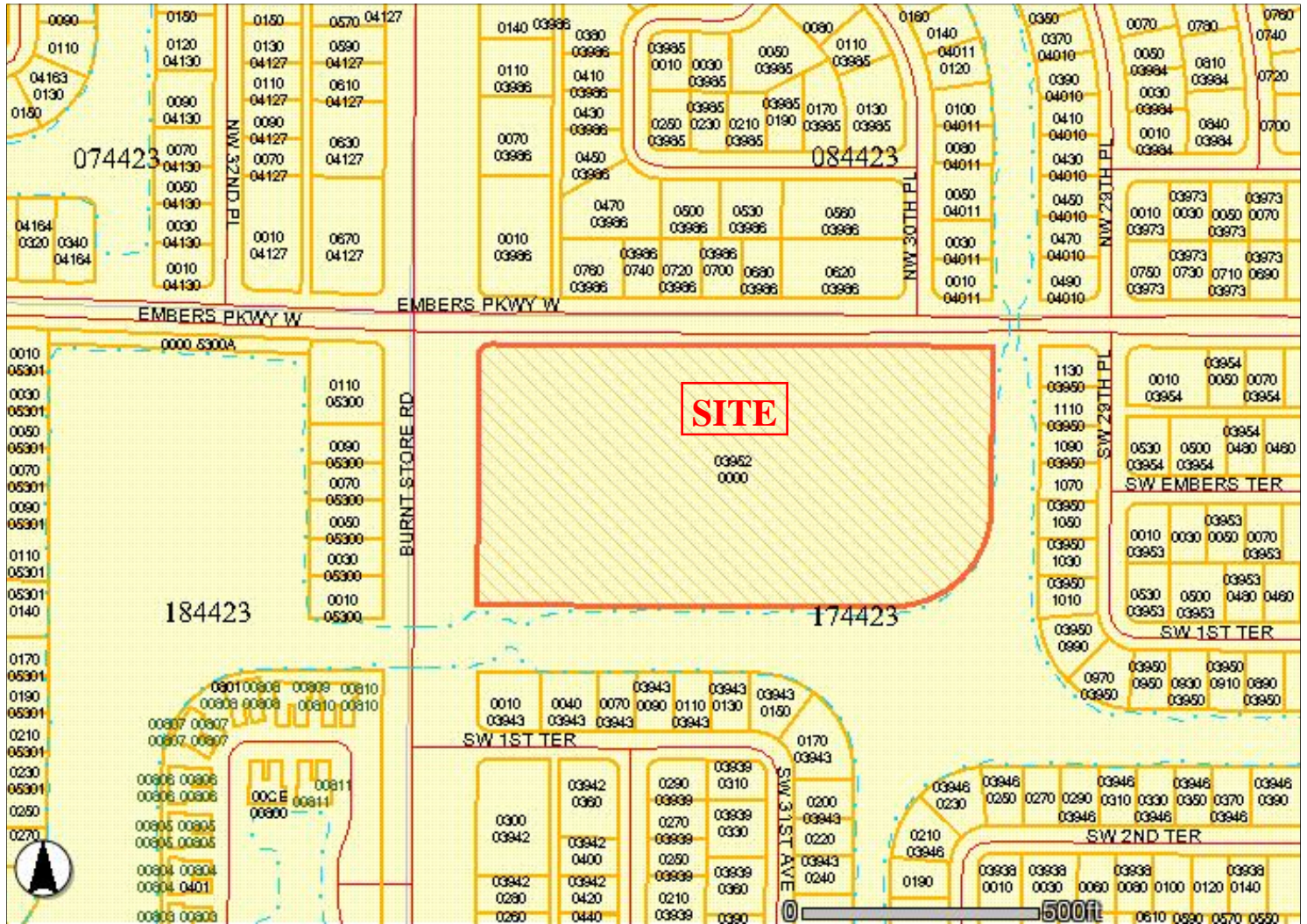
SITE PHOTO



WWW.LQWEST.COM

LandQwest
COMMERCIAL

BURNT STORE RD. & EMBERS PKWY. WEST CAPE CORAL, FL 33993



REMARKS

This parcel, zoned RD-Residential Development, consists of 11.56± acres and is located at the southeast corner of Burnt Store Road and Embers Parkway West. The property features canal frontage on Shadroe Canal to the south and Crete Canal to the east. The current land use category, Commercial Activity Center, is inconsistent with current zoning. The property will need to be re-zoned to MR-Marketplace Residential. This area is ripe for re-development.

FOR MORE INFORMATION CONTACT:

Stephen A. Cunningham, MAI, CCIM

Managing Partner

12800 University Drive, Suite 150, Ft. Myers, FL 33907

PH: 239-333-4360 FX: 239-275-4699 Cell: 239-910-4085

scunningham@lqwest.com

LandQwest
COMMERCIAL

WWW.LQWEST.COM